

Service-Information Motorcycle



BMW of N.A.
Service Department

Group: 36
Wheels and
Tires

October 1984
36 024 84
(2124)

For USA and Canada
Only

CONTINENTAL TK22 RC AND TK44 RC TIRES

After completing successful testing, we can now recommend special versions of the TK22 and TK44 tires for all new BMW motorcycles R50/5 - R100RT, excluding R65, R65LS, R80/GS, R80ST models.

The precise designations are:

Front: 3.25 H 19, TK22, RC tube type
DOT CP1N7 FR 144

Rear: 4.00 H 18, TK44, RC tube type
DOT CPY 26 FR 144

This tire can be identified by a yellow dot with the letters "RC" on the sidewall.

The number "144" in the DOT code indicates the date of manufacture (14th week of 1984). We only recommend tires manufactured from this date on.

Note: The arrow showing the direction of rotation.

Tire and tube manufacturers must be identical, since they are designed as a pair.

Sincerely,

BMW OF NORTH AMERICA, INC.

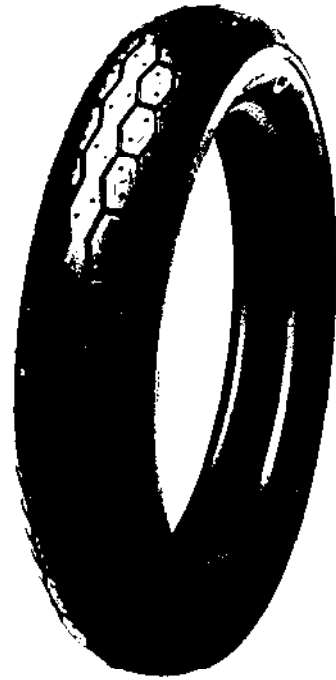
A handwritten signature in black ink, appearing to read 'Richard Dampf'.

Richard Dampf
National Technical Manager
Motorcycle Group

RD:ch



Super Twin RC TK 22



Super Twin RC TK 44