

# Service-Information Motorcycle



©BMW of N.A.  
Service Department

Group: 13  
Fuel Supply &  
Adjustment

March 1990  
13 019 90  
(2399)

For USA Only

**High Altitude Performance Adjustment: Over 4000 Feet above sea level for all 1978 - 1990 models**

The EPA requires the manufacturers of motor vehicles to provide altitude performance instructions. (This requirement is applicable to all motor vehicles to which Title II of the CAA applies).

To improve the emission/performance of low altitude vehicles when operated at a high altitude, a main jet change, as recommended on the enclosed list, is necessary.

When such a vehicle is changed to high altitude settings, a label (see sample below) must be affixed to the rear fender next to the original vehicle emission control label. This label should be requested through the Motorcycle Service Department in writing by quoting:

**No. 2 121 222**

For customer information purposes, please display a copy of this Service Information in your showroom or customer waiting area.

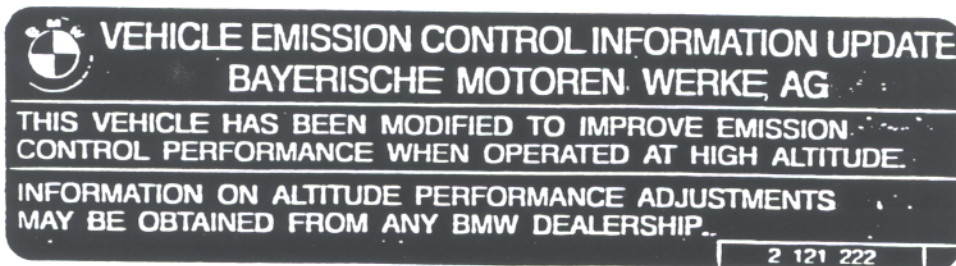
Very truly yours,

BMW of North America, Inc.

Frank Stevens  
National Service Manager  
Motorcycle Group

Richard Dampf  
National Technical Manager

FS:je1/237.7  
Att.



Please initial and route to the following before filing

Service	Parts	Sales	Warranty	Technicians		

★ ★ Maintaining The Legend ★ ★

Model Year	Model Type	Jet Size	
		High Altitude	Std.
1978	R80/7	*142	145
	R100/7	*142	145
	R100S	*158	160
	R100RS	*158	160
1979	R65	138	140
	R80/7	*142	145
	R100S	*162	165
	R100T	*162	165
	R100RS	*162	165
	R100RT	*162	165
1980	R65	*142	145
	R80/7	148	150
	R100S	*162	165
	R100T	*162	165
	R100RT	*162	165
1981	R65	*142	145
	R80GS	148	150
	R100	*158	160
	R100CS	*158	160
	R100RS	*158	160
	R100RT	*158	160
1982	R65	*142	145
	R65LS	*142	145
	R80GS	148	150
	R100	*158	160
	R100CS	*158	160
	R100RS	*158	160
	R100RT	*158	160
1983	R65	135	138
	R65LS	135	138
	R80GS	148	150
	R80RT	148	150
	R80ST	148	150
	R100	*158	160
	R100RS	*158	160
	R100RT	*158	160
1984	R65	135	138
	R65LS	135	138
	R80GS	148	150
	R80RT	148	150
	R80ST	148	150
	R100	158	160
	R100RS	158	160
	R100RT	158	160

Model Year	Model Type	Jet Size	
		High Altitude	Std.
1985	R65	135	138
	R65LS	135	138
	R80	130	135
	R80RT	130	135
	R80GS	130	135
1986	R65	125	130
	R80	130	135
	R80RT	130	135
	R80GS	130	135
	A11 K100s	+	x
A11 K75s	+	x	
1987	R65	125	130
	R80	130	135
	R80RT	130	135
	A11 K100s	+	x
	A11 K75s	+	x
1988	R100GS	130	135
	R100RS	130	135
	R100RT	130	135
	A11 K100s	+	x
	A11 K75s	+	x
1989	R100GS	130	135
	R100RS	130	135
	R100RT	130	135
	A11 K100s	+	x
	A11 K75s	+	x
1990	R100GS	130	135
	R100GS P/D	130	135
	R100RS	130	135
	R100RT	130	135
	K100LT	+	x
	K100RS (8 valve)	+	x
	K75	+	x
	K75S	+	x
K75RT	+	x	
K1 K100RS (16 valve)	{ No adj. needed Self-Compensating		

\* Part No. 13 11 1 337 889 142 Jet  
 Part No. 13 11 1 377 890 158 Jet  
 Part No. 13 11 1 337 891 162 Jet

+ Connect plug & socket as per S.I.  
 13 008 84 (2121)  
 x Plug & socket disconnected